



ASX RELEASE

6 August 2008

Share Purchase Plan – documentation issued to Shareholders

The Company announced to the market on 21 July 2008 the implementation of a Share Purchase Plan. The Record Date to be registered as a Shareholder for participation in this Plan was 4 August 2008.

The Company is now in the process of mailing to its Shareholders full plan documentation and as required by the ASX Listing Rules.

The following documents are being mailed to Shareholders today:

- Offer letter; and
- Share Purchase Plan Rules Booklet (including Q&As).

Copies of these documents are **attached** to this release.

For further information, please contact the share registry on 1300 554 474 (within Australia) or +61 2 8280 7454 (outside Australia).

Yours sincerely

Dr Steven Mercer
CEO, Tissue Therapies Limited
Telephone: 07 3839 9938

Email: s.mercer@tissuetherapies.com

About Tissue Therapies Limited

Tissue Therapies Limited is an Australian company developing biomedical technologies for wound healing, tissue and various cell culture applications.

The Company has worldwide exclusive rights to commercialise VitroGro®, a platform technology developed by tissue engineering experts at the Institute for Health and Biomedical Innovation at QUT for enhancing cell growth and migration. VitroGro® has particular commercial applications in wound healing, tissue regeneration, stem cell therapies and other cell culture uses.

Based on its VitroGro® platform technology, Tissue Therapies is developing more effective medical treatments for wounds and burns, integration of orthopaedic and medical implants, and other applications such as cosmeceuticals.

Tissue Therapies also provides cell culture reagents to enhance the growth of mammalian cells for emerging cell-based therapies, along with research and industrial cell culture markets internationally.

More information: www.tissuetherapies.com



TISSUE THERAPIES

21 July 2008

Dear Shareholder

Share Purchase Plan

Tissue Therapies is ready to convert more than 10 years of scientific research, protein engineering, preclinical and now, clinical trials into powerful, effective, new wound healing treatments for diabetic, venous and pressure ulcers, at an end user price that preclinical data indicates will be more cost effective than existing treatments. Approval has been received for a human trial of VitroGro® in Perth, Australia. This will start after a short period of patient recruitment and the results will complement the human data from the Canadian clinical trial, for which approval is pending.

On behalf of the directors of Tissue Therapies Limited (**TIS**), I am pleased to invite Eligible Shareholders (see below) to participate in the TIS Share Purchase Plan (**SPP**) which will provide the opportunity to purchase up to \$5,000 of TIS ordinary shares without incurring brokerage or transaction costs.

The SPP will be available to persons who are registered as shareholders at 7:00pm (Brisbane time) on 4 August 2008 (**Record Date**), and having a registered address in Australia (**Eligible Shareholders**). Instructions on how to apply for a share allocation and key terms of the offer are contained in the enclosed SPP documentation.

The SPP is intended to provide existing shareholders with the opportunity to purchase further shares in TIS at \$0.08 per share, which represents a discount of 20% to the average market closing price of TIS shares for the 5 trading days prior to the announcement of the SPP.

Use of funds

The funds raised by the SPP will be used primarily for working capital to:

- commence planned clinical trials; and
- continue planned product development related research and development; and
- continue to strengthen the Company's worldwide intellectual property position by progressing the examination process for the expanded VitroGro® family of patents, including in the territories of the United States, European Union, Canada, Japan, South Korea, Hong Kong, China, India, South Africa, Australia and New Zealand.

The capital raised via an SPP is limited by the nature of the process (e.g. \$5,000 maximum investment per Eligible Shareholder). It is anticipated that further capital raising will be required to:

- complete all planned clinical trials; and
- fund commercial scale GMP manufacturing of new formulation VitroGro®, for sale via current and future commercial partners.

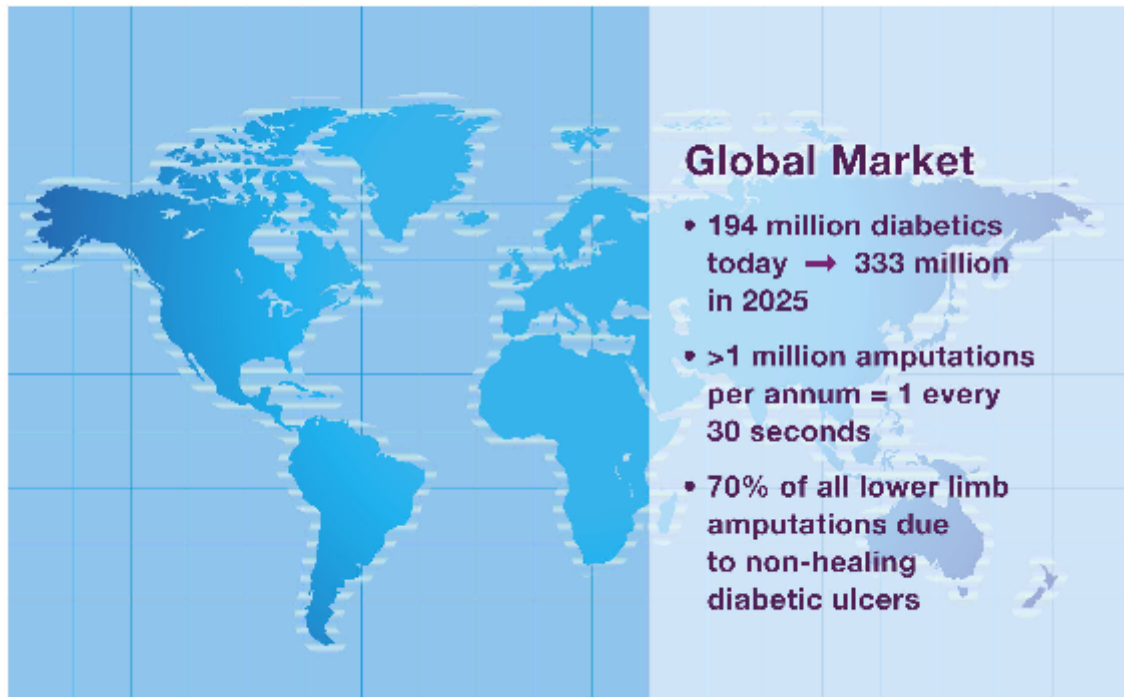
The SPP is entirely voluntary and will enable Eligible Shareholders, regardless of the number of shares they hold in TIS on the Record Date, to subscribe for a maximum of 62,500 ordinary shares at \$0.08 per share, being a maximum subscription of \$5,000 per Eligible Shareholder. Shareholders can subscribe for a minimum parcel of \$1,000 (or 12,500 Shares) and elect for additional shares in multiples of \$1,000 thereafter.

1738184v4

Tissue Therapies Limited ABN 45 101 955 088 www.tissuetherapies.com
6th Floor, Institute of Health & Biomedical Innovation
60 Musk Ave
Kelvin Grove QLD 4059 Australia
GPO Box 1596 Brisbane Qld 4001
telephone +61 7 3839 9938 facsimile +61 7 3839 1486

v5

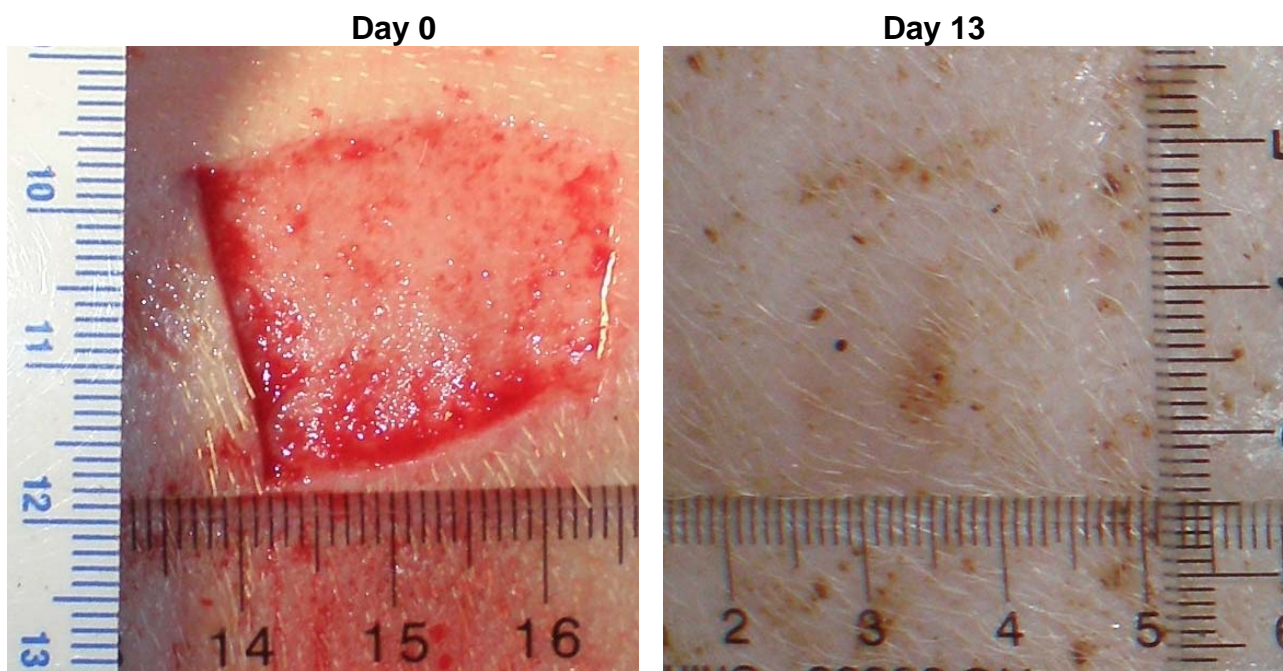
TARGET WOUND CARE MARKET



Highlights

- 1. Approval has been received for a human trial of VitroGro® to start in Perth immediately**
 - Approval is pending for a clinical trial of VitroGro® for the treatment of diabetic, venous and pressure ulcers in Toronto, Canada.
 - Results from each site of the multicentre clinical trial of VitroGro® will be released progressively with final evaluation expected within 6 months of first patient treatment.
 - Positive data from human clinical trials is expected to be the catalyst for formal partnership negotiations with international wound and healthcare companies.
 - Successful classification of VitroGro® for wound treatment as a device (rather than a drug) substantially reduces the time and costs of clinical trial and regulatory approval.
 - 40 patients are scheduled to be treated for 4 - 6 weeks each.
 - Device classification also allows future sales through a far broader range of outlets and partners than would be possible if VitroGro® were classified as a pharmaceutical.
 - The approved trial protocol will allow periodic release of results to Tissue Therapies during the clinical trial and production of a final report within 1 month of trial completion.
- 2. Lead product VitroGro® addresses a significant and growing unmet medical need**
 - VitroGro® has been designed to provide simple, effective and affordable new treatments for diabetic, venous and pressure ulcers. This is backed by ten years of substantial laboratory and preclinical data, including multiple publications in peer-reviewed, scientific journals.
 - Current treatments for diabetic, venous and pressure ulcers are costly and are only moderately effective. These include compression dressings, moist wound healing products, vacuum dressings and antimicrobial dressings to limit infection. Complete healing rates for diabetic, venous and pressure ulcers remain at approximately 25 – 50% following up to 20 weeks of treatment. (9, 10) Our target is to increase the incidence of complete healing substantially reduce the treatment time with VitroGro®.
 - Worldwide, it is estimated that patients suffering diabetic, venous and pressure ulcers spent USD\$4 billion in 2007 on wound dressings, with a compound annual growth rate of 11% – 15%. (1, 2) World market growth is being driven by aging population, increased incidence of diabetes and increasing affordability of health care in developing countries. (1, 2)
 - Up to 70% of all lower limb amputations in the world are related to diabetic ulcers. A lower limb is lost to diabetic ulcers every 30 seconds. This represents more than 1 million amputations globally each year. (5)

3. Preclinical Results: Deep Excisional Wound Treated with VitroGro®



- The photographs above from a preclinical trial show that VitroGro® produces exceptional wound healing in only 13 days that:
 - is scarless
 - is almost indistinguishable from uninjured surrounding skin
 - exhibits restoration of normal skin pigmentation and regeneration of normal hair distribution and direction

4. Potential Strategic Partners

- A number of international wound and healthcare companies have expressed commercial interest in VitroGro®. Identification of promising new technologies must be verified by human trial results. Candidate strategic partner companies have indicated they are waiting for clinical trial results before proceeding with formal partnership negotiations.
- Tissue Therapies' strategy is to use positive human clinical trial results to leverage interest from international wound and healthcare companies to negotiate a strategic partnership agreement for the international sale and distribution of new VitroGro® wound healing products.

5. Commercialisation Strategy

- With available funding, completion of each human clinical trial is anticipated within 6 months of commencement, with periodic disclosure to Tissue Therapies of results during the course of each trial.
- With positive human clinical trial results, Tissue Therapies intends to:
 - use clinical trial data to proceed with formal partnership negotiations with identified potential healthcare partners.
 - apply for regulatory approval of original formulation VitroGro® for sale as a wound care treatment in Canada and countries with mutual recognition agreements with Canada including most of the European Union, Switzerland, Australia and New Zealand.
 - proceed with large scale manufacturing of new formulation VitroGro®, to provide simpler, faster and cheaper manufacturing.
 - repeat a small clinical trial of new formulation VitroGro® using the same protocol as the current clinical trial.
 - apply for regulatory approval of new formulation VitroGro® on the basis of equivalency in Canada and mutual recognition countries and leverage the world-wide sales and distribution capabilities of an appropriate commercial partner for international sales of VitroGro®, including in the USA.

6. Additional Product Pipeline

• Growth of Stem Cells:

- VitroGro® can be used as a completely synthetic replacement for all animal and human serum in the media used to grow stem cells
- This has been demonstrated over more than 20 generations of stem cells
- Stem cells cultured with VitroGro® do not differentiate into other cell types
- In combination with a collaborator's technology, feeder cells can also be removed

• Protease Inhibitor Bandage:

- Removes inhibitory enzymes that prolong healing by degrading proteins necessary for wound healing
- Combines VitroGro® with an already approved pharmaceutical

• Scar Remediation (First Right of Refusal for Commercialisation):

- Specific silicon molecules discovered to reduce skin cell (fibroblast) production of scar tissue (collagen)
- IP developed by scientists at the Queensland University of Technology
- Resulted from a collaboration between cell biologists and polymer chemists

• Bioactive Bandage (First Right of Refusal for Commercialisation):

- Australian Research Council collaboration between Queensland University of Technology, University of Queensland and Tissue Therapies
- Combines nanotechnology beads with VitroGro® to develop sustained release sophisticated wound dressings

Risks

Your Directors encourage your continued support of the Company. Before making an investment decision, however you should read the terms of the SPP Offer and the Plan Rules accompanying this letter in their entirety. An investment in Tissue Therapies is speculative. Risk factors associated with an investment in Tissue Therapies include:

- the capital raised via an SPP is limited by the nature of the process. It is anticipated that further capital raising will be required to complete all planned clinical trials and to fund commercial scale GMP manufacturing of new formulation VitroGro®, for sale via current and future commercial partners;
- the price of the New Shares and New Options may be influenced by factors beyond the control of Tissue Therapies, such as the share market and general economic conditions;
- an inability to gain required approvals for future clinical trials;
- failure to meet clinical trial objectives or adverse events occurring during clinical trials;
- an inability to successfully complete clinical trials and commercialise its intellectual property;
- inability to attract and retain strategic partners;
- timing and cost of regulatory approvals;
- inability to adequately protect intellectual property; and
- competition from companies which have potentially greater access to and volumes of resources.

If you have any questions about participating in the SPP, you should consult your stockbroker, accountant, professional adviser or call Link Market Services Limited on 1300 554 474 (within Australia) or +61 2 8280 7454 (outside Australia).

Please refer to the **enclosed** Tissue Therapies Limited Share Purchase Plan Offer and Rules for further details of the Offer.

Yours sincerely



Dr Steven Mercer
CEO, Tissue Therapies Limited
1738184v4

References:

1. Primary research, Frost & Sullivan and CanCare Consultancy Services
2. Clinical Guide to Wound Care, 6th Ed. 2008, Hess CT, Lippincott, Williams & Wilkins
3. Amos AF, McCarty DJ, Zimmet P. The rising global burden of diabetes and its complications: estimates and projections to the year 2010. *Diabet Med* 1997; 14 Suppl 5: S1-85
4. Sorenson TI. The changing lifestyle in the world. Body weight and what else? *Diabetes Care* 2000; 23 Suppl 2: B1-4
5. Diabetes in North America: millions of feet at risk of amputations. 65th Annual Sessions of the American Diabetes Association, International Diabetes Federation. San Diego, 11 June 2005.
6. Campbell LV, Graham AR, Kidd RM, Molloy HF, O'Rourke SR, Colagiuri S. Position statement of the Australian Diabetes Society. *MJA* 2000; 173: 369-372
7. Boyle JP, Honeycutt AA, Narayan KM, Hoerger TJ, Geiss LS, Chen H, et al. Projection of diabetes burden through 2050: impact of changing demography and disease prevalence in the U.S. *Diabetes Care* 2001; 24 (11): 1936-40
8. Apelqvist J, Larsson J, Agardh, CD. Long term prognosis for diabetic patients with foot ulcers. *J Intern Med* 1993; 233: 483-491
9. Margolis, DJ, Allen-Taylor L, HOffstad O, Berlin JA. Healing diabetic neuropathic foot ulcers: are we getting better? *Diabet Med.* 2005; 22 (2): 172-176
10. Franks PJ, Moffatt CJ. Health related quality of life in patients with venous ulceration: use of the Nottingham health profile. *Qual Life Res.* 2001;10 (8): 693-700
11. Winter GD. Formation of the Scab and the Rate of Epithelialisation of Superficial Wounds in the Skin of the Young Domestic Pig. *Nature Jan* 1962; 193: 293-294
12. Stuart M. Advanced Wound Care: The Device Industry's New Billion Dollar Product Market. *Start-Up,* Nov 2007: 20-26
13. Chronic Wound Care. 4th Ed HMP Communications 2007. Co-editors; Krasner DL, Rodeheaver GT, Sibbald RG.



TISSUE THERAPIES

TISSUE THERAPIES LIMITED SHARE PURCHASE PLAN

21 July 2008

This is an important document.

If you have any doubts as to what you should do,
please consult your stockbroker, accountant
or other professional adviser.

Tissue Therapies Limited
ACN 101 955 088

OFFER

AT

A

GLANCE

Key dates

Announcement Date	21 July 2008	Share Purchase Plan is announced to the market
Record Date	4 August 2008 (7.00pm Brisbane time)	Date for determining Eligible Shareholders
Opening Date	6 August 2008	Share Purchase Plan opens
Closing Date	25 August 2008	Share Purchase Plan closes at 4.00pm (Brisbane time) on this date
Allotment Date	29 August 2008	Shares to be issued under Share Purchase Plan are allotted
Despatch Date	2 September 2008	Confirmation of transaction despatched to shareholders (Allotment Notice)
Quotation Date	3 September 2008	At which time Shares are expected to be traded on ASX

** Dates are indicative only and Tissue Therapies retains the right to vary these dates without advance notice.*

Key Offer details

Issue Price	\$0.08 per Share
Minimum Application Amount	\$1,000 and multiples of \$1,000 thereafter (12,500 Shares)
Maximum Application Amount	\$5,000 (62,500 Shares)

Important Notice

These materials do not constitute an offer of securities for sale in any place outside Australia and this Offer is only made to eligible Tissue Therapies shareholders who, as at the Record Date, are registered shareholders with a registered address in Australia.

Directors of Tissue Therapies who are Eligible Shareholders, reserve the right to participate in the SPP.

The Share Purchase Plan may be varied, suspended or terminated by the Board at any time at the Board's absolute discretion without advance notice. Neither the Company nor the Board accepts or assumes any liability to shareholders by reason of variation, suspension or termination of the Plan.

The acquisition of Shares in the Company under the Plan will have different ramifications depending upon the circumstances of each Eligible Shareholder. Eligible Shareholders wanting to participate in the Plan should obtain independent advice in relation to the taxation consequences of an investment under the Plan.

Tissue Therapies reserves the right to refuse any application made, for example, if a cheque is returned unpaid or if the Application Form has not been properly completed, or where there are grounds for believing that the applicant is not acting in good faith or if holdings have been split into smaller parcels for the purpose of multiple applications under the Plan. Application Forms received after the Closing Date will not be accepted.

QUESTIONS

AND

ANSWERS

** Capitalised terms are defined in the Plan.

What is the Share Purchase Plan?

The Share Purchase Plan (**Plan**) being offered by Tissue Therapies provides Eligible Shareholders with the opportunity to purchase additional Shares in the Company without incurring brokerage and transaction costs at \$0.08 per Share, to raise approximately \$743,475 closing on 25 August 2008 and completed on 3 September 2008.

The Plan will be offered under the Plan Rules (see Annexure A to this Plan booklet) which contains the terms and conditions, as well as some important definitions.

Shares issued under the Plan will rank equally in every respect with existing issued fully paid Shares and will be eligible to participate in all dividends paid after the Allotment Date.

The Company will pay up to 2.5% as a handling fee and stamping fee to brokers.

Why is Tissue Therapies issuing more Shares?

The Plan is intended to provide existing shareholders with the opportunity to purchase further Shares in Tissue Therapies at \$0.08 per Share. The funds raised by this Plan will be used for general working capital to:

- commence planned clinical trials;
- continue planned product development related research and development; and
- continue to strengthen the Company's worldwide intellectual property position by expanding the VitroGro® patents.

The capital raised via an SPP is limited by the nature of the process (e.g. \$5,000 maximum). It is anticipated that further capital raising will be required to:

- complete all planned clinical trials; and
- fund commercial scale GMP manufacturing of new formulation VitroGro®, for sale via current and future commercial partners.

Am I an Eligible Shareholder?

All Tissue Therapies shareholders as at the Record Date, having a registered address in

Australia, are eligible to participate in the Plan (**Eligible Shareholder**).

The Company is not making this Offer to shareholders in countries outside Australia.

Are Eligible Shareholders required to participate in the Plan?

Participation in the Plan is optional for Eligible Shareholders. In the event that an Eligible Shareholder wants to participate in the Plan, it may purchase Shares in accordance with the Plan Rules up to the Maximum Application Amount.

Before deciding on whether to participate in the Plan, and in particular before completing any application for Shares, you should consider the Company's disclosures of operating and financial performance and, if necessary, consult your financial adviser.

The Directors reserve the right to participate in the Plan.

How much can I invest under the Plan?

Eligible Shareholders may subscribe for Shares up to the Maximum Application Amount, being \$5,000. The Maximum Application Amount is calculated using the Issue Price so that the number of Shares subscribed for, multiplied by the Issue Price, must not exceed \$5,000.

Applications must be for at least the Minimum Application Amount of \$1,000 and in multiples of \$1,000 thereafter.

What is the Issue Price?

The Issue Price is \$0.08 per Share.

This represents a discount of 20% to the average market price of the Shares for the 5 trading days prior to the Announcement Date.

The Issue Price will not change during the offer period.

What risks are associated with investing under the Plan?

The market price for the Company's Shares may change between the Announcement Date and the Allotment Date, but the Issue Price will not

change during this period. If the market price of Shares falls below the Issue Price, you may be financially disadvantaged by purchasing Shares under the Plan.

An investment in Tissue Therapies is speculative.

Before making an investment decision, you should read the terms of the Offer set out in the accompanying offer letter and the terms of the Offer contained in the Plan Rules. As set out in the Offer Letter, the risks associated with an investment in Tissue Therapies include:

- further capital raising will be required to complete all planned clinical trials and to fund commercial scale GMP manufacturing of new formulation VitroGro®;
- the price of the New Shares and New Options may be influenced by factors beyond the control of Tissue Therapies;
- an inability to approvals for future clinical trials;
- failure to meet clinical trial objectives or adverse events occurring during clinical trials;
- an inability to successfully complete clinical trials and commercialise its intellectual property;
- inability to attract and retain strategic partners;
- timing and cost of regulatory approvals;
- inability to adequately protect intellectual property; and
- competition from companies which have potentially greater access to and volumes of resources.

When can I sell Shares purchased under the Plan?

Shares issued under the Plan may be sold or transferred on ASX at any time after quotation.

The Company will apply for quotation on the on the Quotation Date of all Shares issued under the Plan on the Official List of ASX Limited following the processing of those Applications received from Eligible Shareholders by the Closing Date.

How do I apply for Shares under the Plan?

Eligible Shareholders can subscribe for Shares under the Plan in one of two ways, depending upon whether payment is to be made by cheque or by BPay.

For payment by cheque:

Eligible Shareholders must complete the personalised Application Form enclosed with this Plan booklet and return it with a cheque in payment of the Application Amount before 4.00pm (Brisbane time) on 25 August 2008 to:

The Share Registry – Tissue Therapies Limited
Link Market Services Limited
Locked Bag 3415
BRISBANE QLD 4001

or deliver it to

The Share Registry - Tissue Therapies Limited
Link Market Services Limited
Level 12, 300 Queen Street
BRISBANE QLD 4000

For payment by BPay:

Eligible Shareholders who wish to pay by BPay, must follow the instructions on the Application Form before 4.00pm (Brisbane time) on 25 August 2008.

What is the Subscription Amount?

The Subscription Amount is calculated as the number of Shares applied for, multiplied by the Issue Price.

Example:

1,000 Shares x \$0.08 = \$80

How many Shares will I receive?

Eligible Shareholders will receive the number of Shares applied for up to the Maximum Application Amount, subject to the Company undertaking a Scaleback.

The Company may, in its absolute discretion, undertake a Scaleback, including for the purpose of complying with Listing Rule 7.2, Exception 15, so that not more than 30% of the number of ordinary shares already on issue are issued under the Plan. If the Company undertakes a Scaleback, the number of Shares applied for on each Application will be scaled back on a pro-rata basis.

Will the Offer be available again?

The SPP is intended to be a one-off offer to Eligible Shareholders, providing them with an opportunity to purchase additional Shares without transaction costs or brokerage. However, the Board retains the right to make similar offers under future Share Purchase Plans.

Contact details

If you have any further queries in relation to the Plan, please contact the Share Registry on 1300 554 474 (within Australia) or +61 2 8280 7454 (outside Australia).

Applications and payment must be received before 4.00pm (Brisbane time) on 25 August 2008.

Annexure A

Share Purchase Plan Rules

1. Definitions and interpretations

- 1.1 When used in these Rules, the words listed will, except to the extent that the context otherwise requires, have the following meanings:

Term	Definition
Announcement Date	means the date on which the Plan is announced to the market on ASX, being 21 July 2008.
Allotment Date	means the date on which the Shares to be issued under the Plan are allotted, being 29 August 2008.
Allotment Notice	means a notice sent to Shareholders confirming allotment of Shares issued under the Plan.
Application	means an application for Shares under this Plan.
Application Amount	means the amount of Shares to be purchased under an Application Form having regard to the Minimum Application Amount and Maximum Application Amount.
Application Form	means a personalised application form pursuant to which Eligible Shareholders may apply for Shares under the Plan.
ASIC	means the Australian Securities and Investments Commission.
ASX	means ASX Limited ACN 008 624 691.
Board or Board of Directors	means the board of directors of Tissue Therapies.
Company or Tissue Therapies	means Tissue Therapies Limited ACN 101 955 088.
Constitution	means the constitution of Tissue Therapies.
Closing Date	means the closing date for the Plan, being 25 August 2008.
Despatch Date	means the date on which Allotment Notices will be sent to shareholders, being 2 September 2008.
Eligible Shareholder	means a shareholder in Tissue Therapies as at the Record Date with a Registered Address in Australia.
Issue Price	means the price at which new Shares will be allotted in accordance with clause 4.4, being \$0.08, representing a discount of 20% to the average market price of the Shares for the 5 trading days prior to 21 July 2008.
Minimum Application Amount	means \$1,000 and multiples of \$1,000 thereafter (12,500 Shares).
Maximum Application Amount	means \$5,000 (62,500 Shares).
Offer	means the offer of Shares under the Plan on the terms set out in the Rules.
Official List	means the official list for quotation on ASX.
Opening Date	means the date on which the Plan opens, being 6 August 2008.
Plan Rules or Rules	means these rules.

Term	Definition
Plan or SPP	means the Tissue Therapies Share Purchase Plan.
Quotation Date	means the date on which Shares are expected to be traded on the Official List, being 3 September 2008.
Record Date	means the date for determining who will be an Eligible Shareholder, being 4 August 2008.
Registered Address	means the address of an Eligible Shareholder as shown in the Share Register.
Scaleback	means a pro-rata reduction in the number of Shares allotted to Eligible Shareholders who lodge an Application. Tissue Therapies has full discretion in deciding whether to Scaleback Applications.
Share Register	means the register of all shareholders maintained by the Share Registry.
Share Registry	means Link Market Services Limited of Level 12, 300 Queen Street, Brisbane, Queensland, 4000.
Share	means a fully paid ordinary share in Tissue Therapies.

- 1.2 Words importing the singular include the plural and vice versa, words importing any gender include other genders and 'person' includes a corporation.
- 1.3 Headings are for convenience only and do not affect the interpretation.
- 1.4 Any reference to time shall mean the time in Brisbane, Australia.
- 1.5 A reference to a Schedule means the schedule to this document.

2. Offer timetable

- 2.1 This Offer is dated and taken to be made on the Announcement Date.
- 2.2 This Offer opens on the Opening Date.
- 2.3 Only Eligible Shareholders may participate in the Plan.
- 2.4 It is intended that this Offer will close on the Closing Date and that all Application Forms and payments of the Application Amounts must be received by the Share Registry before the Closing Date.
- 2.5 It is intended that Shares will be allotted on or about the Allotment Date.
- 2.6 Any Scaleback will be announced on the Allotment Date. Tissue Therapies expects Allotment Notices (and any refund cheques in payment of any Scaleback amount) will be despatched on or about the Despatch Date.
- 2.7 Tissue Therapies anticipates trading of Shares issued under the Plan on ASX will commence on the Quotation Date.
- 2.8 Tissue Therapies has the discretion to change, at any time, any of these dates, regardless of whether the Offer has opened or Applications have been received.

3. Participation in the Plan

- 3.1 Participation in the Plan is subject to these Rules. The Offer made under this Plan is made only to Eligible Shareholders.
- 3.1 This Offer is non-renounceable.
- 3.3 The Board may refuse to accept or may suspend or withdraw any Application if that Application might:
- (a) prejudice the effective operation of the Plan; or
 - (b) give rise to breaches of applicable laws by Tissue Therapies or its officers or by the Participants or their associates,
- and may reject any Application if it has reason to believe that the Participant concerned may not be acting in good faith.
- 3.4 It is the responsibility of each Eligible Shareholder to obtain any necessary approvals to enable them to participate in the Plan.
- 3.5 The Directors who are Eligible Shareholders, may participate in the Plan.
- 3.6 The Directors are entitled (but not obliged) to refuse an Application where an Eligible Shareholder has, in the opinion of the Directors, split a shareholding, or acquired Shares as part of such a split, in order to attempt to increase the number of Shares that may be allotted under the Plan to that Eligible Shareholder or another person.

4. Application to participate

- 4.1 An Eligible Shareholder may apply to Tissue Therapies to participate in the Plan by completing and signing an Application Form and returning it to the Share Registry with a cheque for payment of the Application Amount, before the Closing Date or by making a payment by BPay before the Closing Date following the instructions on the Application Form.
- 4.2 Applications must specify the Application Amount in Australian dollars, for the number of Shares applied for at the Issue Price (being not less than \$1,000 (and multiples of \$1,000 thereafter) and not more than \$5,000) and be accompanied by a cheque in payment of this amount unless payment is to be made by BPay.
- 4.3 Subject to rule 4.2, participation in the Plan may be full or partial.
- 4.4 Shares issued under the Plan will be issued at the Issue Price and allotted as fully paid.
- 4.5 Fractional shares will not be issued. The number of Shares issued pursuant to an Application may be subject to rounding in the discretion of the Directors or the Share Registry.

5. Operation of the Plan

- 5.1 An Eligible Shareholder who elects to participate in the Plan shall be deemed to have:
- (a) confirmed, in relation to all Shares applied for by him or her under the Plan, that he or she does not make the Application for any other person in circumstances which might involve any breach of securities laws of any jurisdiction other than Australia; and
 - (b) agreed to be bound by the Company's Constitution in respect of all the Shares issued to them under the Plan.

6. Shares issued under the Plan

- 6.1 Shares issued under the Plan will rank equally in all respects with existing Shares.
- 6.2 Shares issued to Eligible Shareholders under the Plan will be registered on the Share Register.
- 6.3 Tissue Therapies will promptly, following the issue and allotment of Shares under the Plan:
 - (a) apply to ASX for admission to the Official List; and
 - (b) send an Allotment Notice to his or her Registered Address.

7. Cost to participants

- 7.1 Subject to rule 7.2, no brokerage, commission or other transaction costs will be payable by an Eligible Shareholder in respect of Shares issued under the Plan.
- 7.2 In the event of a change in legislation so that at the date of any issue or allotment of Shares, stamp duty or any other tax or duty is payable on Shares issued under the Plan, the amount of such stamp duty or other tax or duty shall be paid by the Eligible Shareholder to whom the Shares are issued and, in respect of each such Share, included in the calculation of the Issue Price.

8. Non-participation

Participation in the Plan is voluntary. It shall be a matter for each Eligible Shareholder to determine whether or not they make an Application for Shares under the Plan.

9. Scaleback

- 9.1 Tissue Therapies may, in its absolute discretion, undertake a Scaleback to the extent and in the manner it sees fit, including for the purpose of compliance with Listing Rule 7.2, Exception 15.
- 9.2 If Tissue Therapies undertakes a Scaleback, the difference between the value of the Shares allotted and the Application Amount paid to the Company by the Applicant will be refunded by cheque and mailed to the Applicant on the Despatch Date.

10. Applications and notices

- 10.1 Applications and notices for the purposes of the Plan shall be in writing in such form and lodged at such place as Tissue Therapies and the Share Registry may from time to time require.
- 10.2 Applications and notices (other than notices of death, bankruptcy or liquidation) in respect of Shares registered in joint names shall be completed by all registered holders of those Shares who wish to subscribe for Shares.
- 10.3 Applications and notices will take effect on and from the date on which they are received by the Share Registry provided that an Application to participate in the Plan is not effective until it has been accepted by the Board and the Application Amount is received.
- 10.4 The Company has an absolute discretion to:
 - (a) accept and treat as valid an Application Form which does not satisfy the provisions of clause 10.1; and

(b) reject and treat as invalid an Application Form where the Board of Directors has determined acceptance of the application Form would or might prejudice the effective operation of the Plan or would or might otherwise be contrary to the laws of any country.

10.5 The Company will be under no obligation to correct or amend defective Application Forms on behalf of Eligible Shareholders.

11. Board's powers in relation to the administration, variation, suspension or termination of the Plan

11.1 The Plan will be administered by the Board of Directors which has the power to:

(a) determine appropriate procedures for administration and implementation of the Plan, consistent with the Plan Rules and to settle any difficulty which may arise generally or in a particular case, in regard to the Plan as the Board of Directors thinks fit and its determination will bind all shareholders and other persons to whom the determination relates;

(b) resolve conclusively all questions of fact or interpretation in connection with the Plan; and

(c) delegate to any one or more persons for such period and on such conditions as it may determine, the exercise of its powers or discretions arising under the Plan, but not including any powers under clause 11.4.

11.2 The Company and its officers and employees will not be held responsible or liable for any error or omission which occurs in the administration of the Plan.

11.3 The Board may vary administrative procedures to be followed in respect of the implementation of the Plan. The procedures may be varied at any time by the Board having regard to ASX or ASIC requirements.

11.4 The Board may:

(a) at any time modify, vary or amend the Plan;

(b) suspend the operation of the Plan from time to time for any period; or

(c) terminate the Plan at any time without any need for giving advance notice to shareholders.

12. Taxation

Tissue Therapies makes no representations or warranties in respect of, and accepts no responsibility for, the liability of Eligible Shareholders to pay income tax in respect of any allotment or issue of Shares, payment or other transaction pursuant to this Plan.